

**NEW**

# WELD-ON LIFTING POINTS



## ABA- Load Ring

Innovation through design

Manufactured in Germany using high tensile steel

Full working load in all directions

Patented wear markings on the insides and on the outside

DIY Fitting to suit various weights

The perfect solution for safe towing and lifting



**NEW**

# Full working load in all directions!



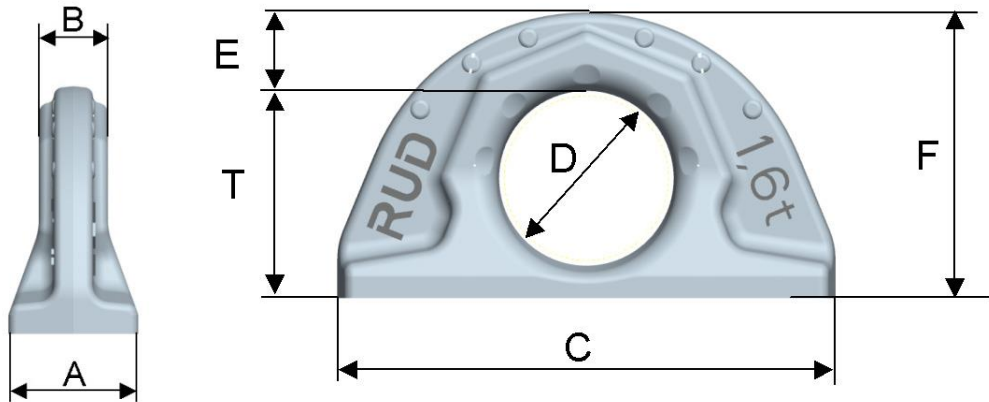
# WELD-ON LIFTING POINTS

**NEW**

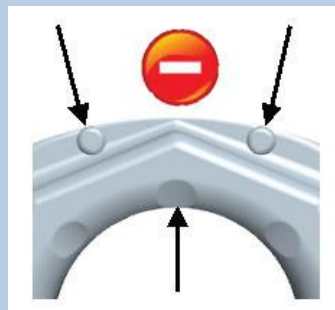
## SPECIFICATIONS

CODE	TYPE	WLL (T)	A	B	C	D	E	F	T	WEIGHT (kg/pc)
<b>306305</b>	ABA 1.6t	1.6	30	16	100	35	16	57	41.5	0.44
<b>306306</b>	ABA 3.2t	3.2	41	23	137	50	21	80	59	1.1
<b>306307</b>	ABA 5.0t	5.0	51	27	172	60	27.5	99	71.5	2.3
<b>306308</b>	ABA 10.0t	10.0	70	38	228	80	35	130	95	5.3

Dimensions and specifications subject to change\*



Use permitted:  
Wear marks visible



Use prohibited:  
Replacement criteria reached. Material all the way down to the wear lenses has gone.

- Manufactured in Germany using high tensile CrNiMo - steel
- 100% Electro-magnetic crack detection tested
- Complies with DIN 5691 and EN 1677
- 4:1 Safety Factor on Working Load Limit
- Temperature Range -40°C to 100°C no reduction in WLL
- Full working load in all directions
- Patented wear markings on the inside and on the outside

Source: Rud Chains Pty Ltd

# WELD-ON LIFTING POINTS USER INSTRUCTIONS



WORKING LOAD LIMITS (G - in tonnes)				
PRODUCT DESCRIPTION	Single Leg	2, 3 or 4 Legs		
		60°	90°	120°
		Maximum Included Angle		
ABA 1.6 t	1.6	2.8	2.2	1.6
ABA 3.2 t	3.2	5.5	4.5	3.2
ABA 5 t	5.0	8.6	7.0	5.0
ABA 10 t	10.0	17.3	14.1	10.0

WELD SIZE (per welding block)			
	Size	Length (mm)	Approximate Volume (cm <sup>3</sup> )
ABA 1.6 t	a = 4	251	4.0
ABA 3.2 t	a = 6	344	12.4
ABA 5 t	a = 7	431	21.1
ABA 10 t	a = 8	576	38.9

WELDING PROCESS	
MILD STEEL / LOW ALLOYED STEEL	
<b>MIG</b> GAS SHIELDED WIRE WELDING	AWS A5.18 eg: WIA - Austmig ES6 or Hobart XL 525) or equivalent. (Flux Cored for material >24mm).
<b>MMA</b> MANUAL ELECTRIC WELDING	AWS A5.5 : E8018-G. AWS A5.1 : E7018. eg: WIA - Austarc 16TC or Weldwell PH77 or equivalent.
<b>NB. Please refer to the consumables manufacturer for user instructions and further information.</b>	



Picture 3